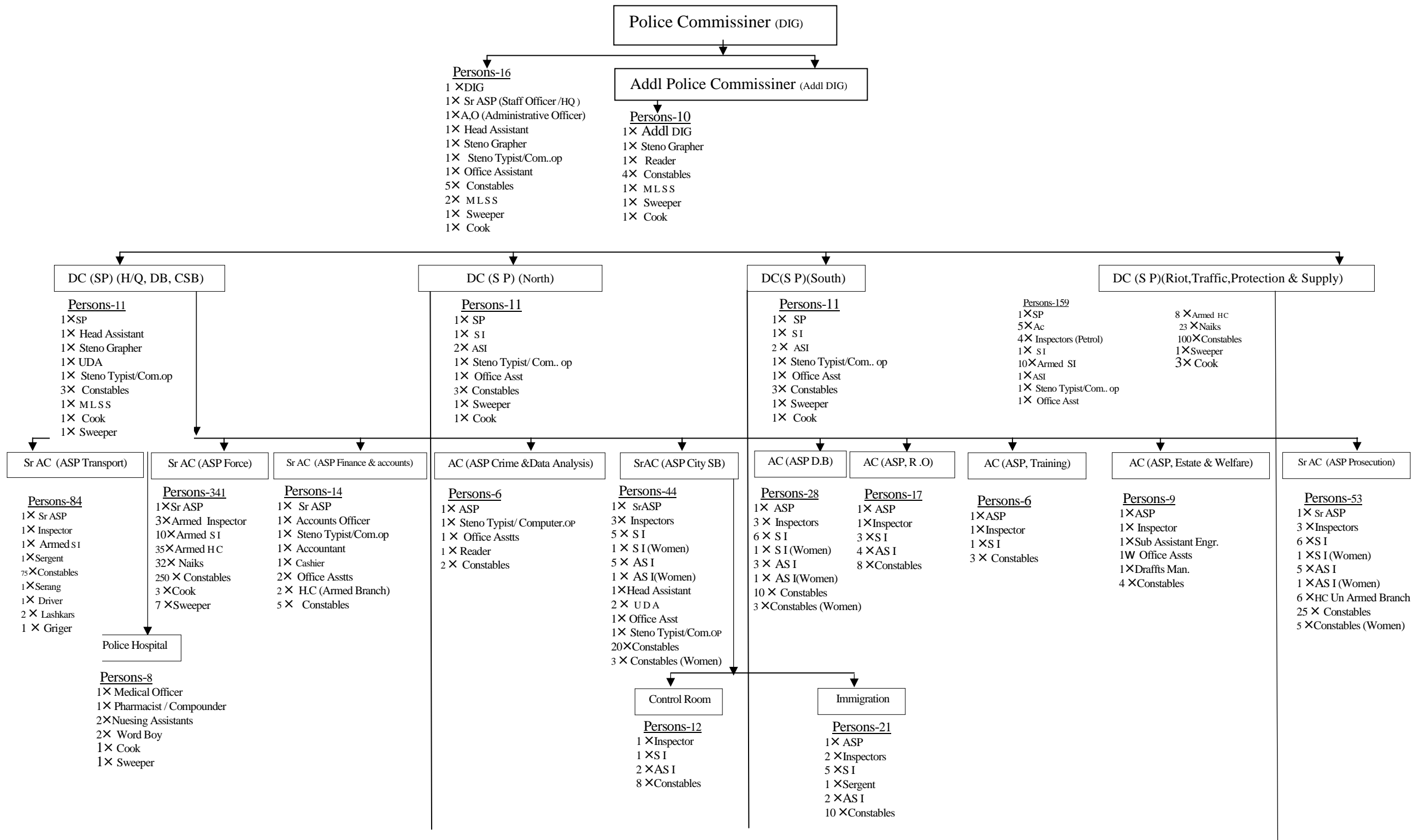
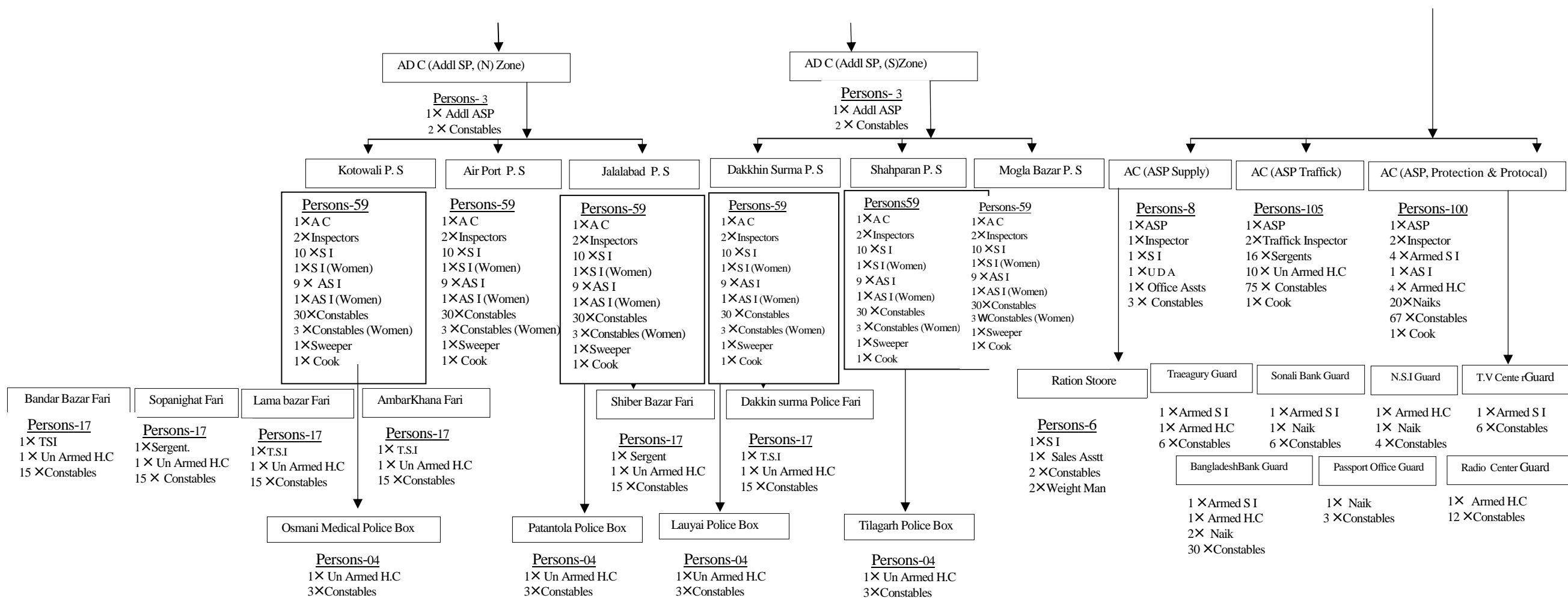


Proposed Organizational Setup of Sylhet Metropolitan Police

Total Peraons-1518+40(Out Sourcing)=1558





Total officers/forces & other staff of Sylhet Metropolitan police at a glance.

DIG (Police commissioner)-	1	Medical officer-	1	Cashier-	1
Addl. DIG (Additional Police Commissioner)	1	A.O-	1	Nuresing Asstt-	2
SP- (DC)-	4	Accounts Officer-	1	Serag-	1
Addl S.P-(A.D.C)-	2	Sub Asstt Engr-	1	Driver-	1
Sr.A.S.P (Sr.AC)-	6	Pharmacist/Compounder-	1	Draffts Man-	10
A.S.P (AC)-	20	Head Asstt-	3	Word Boy-	2
Inspector-	40	teno Grapher-	3	MLSS-	4
Sud Inspector(A.B+U.B+ TSI+Women)-	130	Accountant-	1	Lashkars-	2
25+ 92 + 04 + 09		U.D.A-	4	Griger-	1
Sergent-	20	Steno Typist/Computer. Op-	8	Wight man-	2
Asstt Sud Inspector(U.B+Women)-	90	Reader-	2	Sales Asstt-	1
81+ 09					
H.C (U.B+A.B)-	75			TOTAL - 1518	
26+ 49					
Naiks-	75			COOK - 20	
Constables(A.B+U.B+Women)-	1000			SWEEPER 20	
506 + 465+29				(FROM OUT SOURCING)	

Inspectors	
Unarmed	
City S.B-	3
D.B-	3
R.O.I-	1
Training-	1
Estate & Welfare-	1
Prosecution-	3
Control room-	1
Immigration-	2
Police station-	12
Armed	
Petrol Inspectors-	4
M.T-	1
S.A.F-	3
Supply-	1
Traffic-	2
Protection & Protocol-	2
Total-	40

Sub Inspectors	
Unarmed	
DC (North)-	1
DC (South)-	1
DC (Riot, Traffic, Protection & Supply)-	1
City, S.B-5+1 (Women)=	6
D.B-6+1 (Women)=	7
R.O Office-	3
Training-	1
Prosecution-6+1 (Women)=	7
Control Room-	1
Immigration-	5
Police Station-60+6 (Women)=	66
Supply-	1
Ration Store-	1
(92+ 04+ 09)	105
Unarmed S.I-105	
Armed S.I- 25	
Total- 130	

Sergents	
M.T-	1
Riot Div-	10
Immigration-1	1
Traffic Div- 16	16
Police Fari- 2	2
Total- 20	

Asstt Sub Inspectors	
D.C (North)-	2
D.C(South)-	2
DC (Riot,Traffic,Protection & Supply)-	1
City S.B-5+1(Women)=	6
D.B-3+1(Women)=	4
R.O Office-	4
Prosecution-5+1(Women)=	6
Control Room-	2
Immigration-	2
Police Station-54+6(Women)=	60
Protection & Protocol-	1
Total- (81+9)	90

BREAK UP OF ARMED & UNARMED FORCE

H.C

Unarmed H.C

Sr AC (ASP Prosecution)-	6
A.C Traffic-	10
Police Fari-	6
Police Box-	4
Total Unarmed H.C	26

Armed H.C

DC (S P)(Riot, Traffic, Protection & Supply)-	8
A.C Force office-	35
Sr AC (ASP Finance & accounts)-	2
AC (ASP, Protection & Protocal)-	4
Total Armed H.C	49

Head Constable (U.B) - 26

Head Constable (A.B) - 49

Total- 75

NAIK

DC (S P)(Riot, Traffic, Protection & Supply)-	23
Sr AC (ASP Force)-	32
AC (ASP, Protection & Protocal)-	20
Total Naik =	75

CONSTABLES

Armed

Commissioner office-	5
Adll Commissioner-	4
D.C H.Q/DB/C.S.B Office-	3
D.C (North) Office-	3
D.C (South) Office-	3
DC (S P)(Riot, Traffic, Protection & Supply)-	100
A.D.C(H.Q/Zone)-	2
A.D.C(H.Q/Zone)-	2
A.C, M.T-	40
A.C (Force)-	250
AC (ASP Finance & accounts)-	5
AC (ASP Crime &Data Analysis)-	2
AC (Tranning)-	3
AC (Estate & Welfare)-	4
AC (Control)-	8
AC (Supply)-	3
AC (Protection & Protocal)-	67
Ration Store-	2
Total	506

Unarmed

A.C, C.S.B-20+3 (Women)=	23
A.C,D.B-10+3 (Women)=	13
A.C (R.O)-	8
A.C(Prosecution)-25+5(Women)=	30
A.C(M.T)-	35
A.C (Immigration)-	10
Police Station-180+18 (Women)=	198
A.C(Traffic)-	75
Police Fari-	90
Pllice Box-	12
Total	494

Armed - 506

Unarmed - 465+29(women)

Total = 1000

BREAK UP OF Civil Staff

Steno Grapher Total-	3
Commissioner office	1
AddlCommissioner office	1
D.C (H.Q)-	1

Head Assistant-	3
Commissioner office	1
D.C (H.Q)-	1
A.C, C.S.B-	1

UDA-	4
D.C (H.Q)-	1
A.C, C.S.B-	2
A.C (Supply)	1

Steno Typist/Com.op-	8
Commissioner office	1
D.C (H.Q)-	1
D.C (North)-	1
D.C (South)-	1
DC (Riot,Traffic,Protection & Supply)-	1
A.C (Crime)-	1
AC,CSB-	1
AC (ASP Finance & accounts)-	1

Reader-	2
AddlCommissioner office	1
AC (ASP Crime &Data Analysis)-	1

Office Assistant-	10
AddlCommissioner office	1
D.C (North)-	1
D.C (South)-	1
DC (Riot,Traffic,Protection & Supply)-	1
AC (ASP Finance & accounts)-	2
AC (ASP Crime &Data Analysis)-	1
AC,CSB-	1
AC (Estate & Welfare)-	1
A.C (Supply)	1

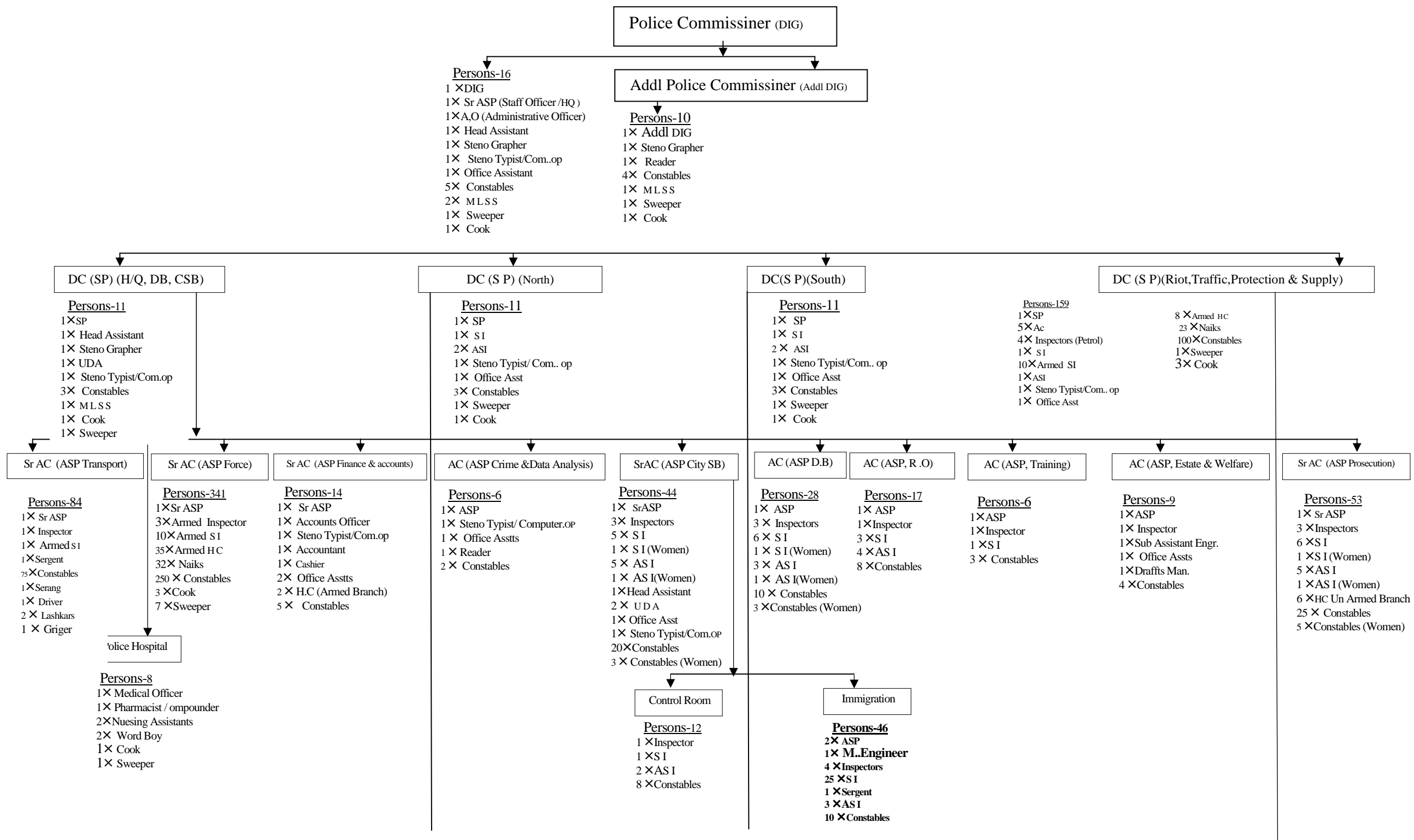
M.L.S.S-	4
Commissioner office	2
AddlCommissioner office	1
D.C (H.Q)-	1

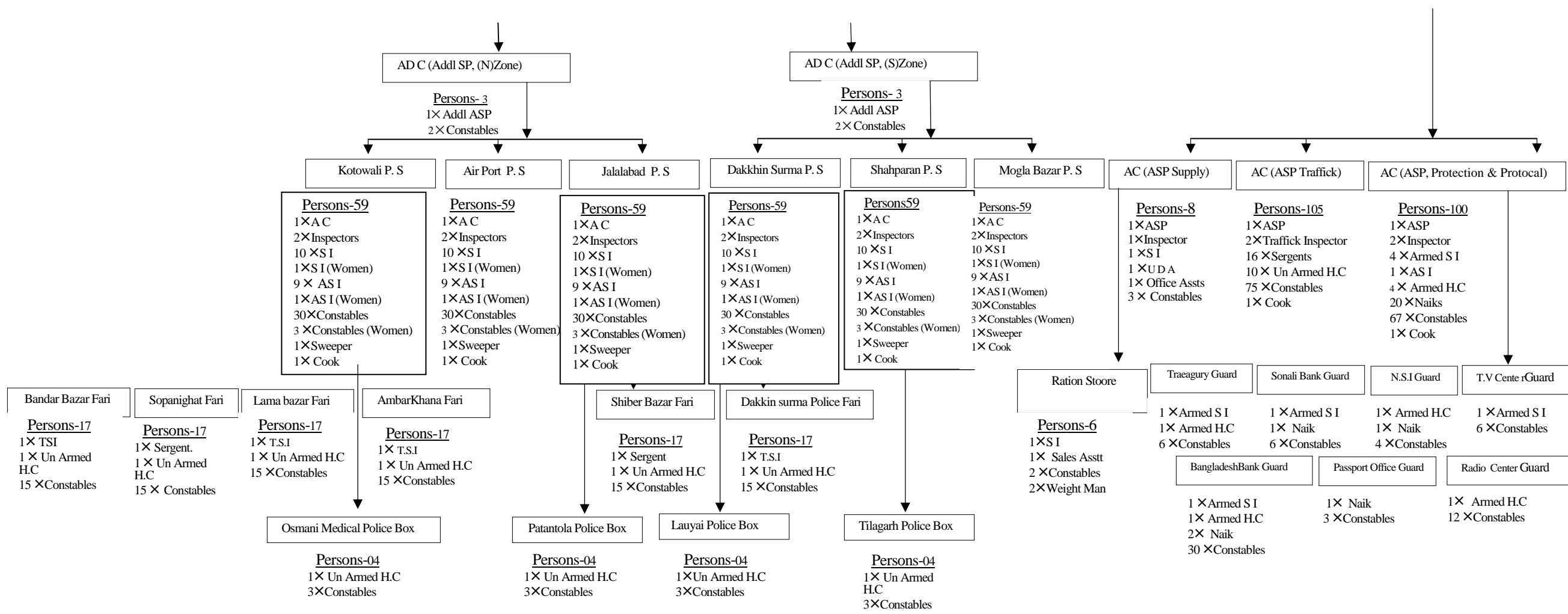
Cook-	20
Sweeper-	20

From out Sourcing-

Proposed Organizational Setup of Sylhet Metropolitan Police

(1518+25)=1543 +40(Out Sourcing)=Total Peraons-1583





Total officers/forces & other staff of Sylhet Metropolitan police at a glance.

DIG (Police commissioner)-	1	Medical officer-	1	Cashier-	1
Addl. DIG (Additional Police Commissioner)	1	Maintanens Engineer	1	Nuresing Asstt-	2
SP- (DC)-	4	A.O-	1	Serag-	1
Addl S.P-(A.D.C)-	2	Accounts Officer-	1	Driver-	1
Sr.A.S.P (Sr.AC)-	6	Sub Asstt Engr-	1	Draffts Man-	10
A.S.P (AC)-	21	Pharmacist/Compounder-	1	Office Asstt-	2
Inspector-	42	Head Asstt-	3	Word Boy-	2
Sud Inspector(A.B+U.B+ TSI+Women)-	150	tento Grapher-	3	MLSS-	4
25+ 112 + 04 + 09		Accountant-	1	Lashkars-	2
Sergent-	20	U.D.A-	4	Griger-	1
Asstt Sud Inspector(U.B+Women)-	91	Steno Typist/Computer. Op-	8	Wight man-	2
82+ 09		Reader-	2	Sales Asstt-	1
H.C (U.B+A.B)-	75			TOTAL - 1543	
26+ 49				COOK - 20	
Naiks-	75			SWEEPER 20	
Constables(A.B+U.B+Women)-	1000			(FROM OUT SOURCING)	
506 + 465+29					

Inspectors	
Unarmed	
City S.B-	3
D.B-	3
R.O.I-	1
Training-	1
Estate & Welfare-	1
Prosecution-	3
Control room-	1
Immigration-	4
Police station-	12
Armed	
Petrol Inspectors-	4
M.T-	1
S.A.F-	3
Supply-	1
Traffic-	2
Protection & Protocol-	2
Total-	40

Sub Inspectors	
Unarmed	
DC (North)-	1
DC (South)-	1
DC (Riot, Traffic, Protection & Supply)-	1
City, S.B-5+1 (Women)=	6
D.B-6+1 (Women)=	7
R.O Office-	3
Training-	1
Prosecution-6+1 (Women)=	7
Control Room-	1
Immigration-	25
Police Station-60+6 (Women)=	66
Supply-	1
Ration Store-	1
(112+ 04+ 09)	125
Unarmed S.I-125	
Armed S.I- 25	
Total-	150

Sergents	
M.T-	1
Immigration-1	1
Traffic Div- 16	16
Police Fari- 2	2
Total-	20

Asstt Sub Inspectors	
D.C (North)-	2
D.C(South)-	2
DC (Riot,Traffic,Protection & Supply)-	1
City S.B-5+1(Women)=	6
D.B-3+1(Women)=	4
R.O Office-	4
Prosecution-5+1(Women)=	6
Control Room-	2
Immigration-	3
Police Station-54+6(Women)=	60
Protection & Protocol-	1
Total- (82+9)	91

BREAK UP OF ARMED & UNARMED FORCE

H.C

Unarmed H.C

Sr AC (ASP Prosecution)-	6
A.C Traffic-	10
Police Fari-	6
Police Box-	4
Total Unarmed H.C	26

Armed H.C

DC (S P)(Riot, Traffic, Protection & Supply)-	8
A.C Force office-	35
Sr AC (ASP Finance & accounts)-	2
AC (ASP, Protection & Protocal)-	4
Total Armed H.C	49

Head Constable (U.B) - 26

Head Constable (A.B) - 49

Total- 75

NAIK

DC (S P)(Riot, Traffic, Protection & Supply)-	23
Sr AC (ASP Force)-	32
AC (ASP, Protection & Protocal)-	20
Total Naik =	75

CONSTABLES

Armed

Commissioner office-	5
Adll Commissioner-	4
D.C H.Q/DB/C.S.B Office-	3
D.C (North) Office-	3
D.C (South) Office-	3
DC (S P)(Riot, Traffic, Protection & Supply)-	100
A.D.C(H.Q/Zone)-	2
A.D.C(H.Q/Zone)-	2
A.C, M.T-	40
A.C (Force)-	250
AC (ASP Finance & accounts)-	5
AC (ASP Crime &Data Analysis)-	2
AC (Tranning)-	3
AC (Estate & Welfare)-	4
AC (Control)-	8
AC (Supply)-	3
AC (Protection & Protocal)-	67
Ration Store-	2
Total	506

Unarmed

A.C, C.S.B-20+3 (Women)=	23
A.C,D.B-10+3 (Women)=	13
A.C (R.O)-	8
A.C(Prosecution)-25+5(Women)=	30
A.C(M.T)-	35
A.C (Immigration)-	10
Police Station-180+18 (Women)=	198
A.C(Traffic)-	75
Police Fari-	90
Pllice Box-	12
Total	494

Armed - 506

Unarmed - 465+29(women)

Total = 1000

BREAK UP OF Civil Staff

Steno Grapher Total-	3
Commissioner office	1
AddlCommissioner office	1
D.C (H.Q)-	1

Head Assistant-	3
Commissioner office	1
D.C (H.Q)-	1
A.C, C.S.B-	1

UDA-	4
D.C (H.Q)-	1
A.C, C.S.B-	2
A.C (Supply)	1

Steno Typist/Com.op-	8
Commissioner office	1
D.C (H.Q)-	1
D.C (North)-	1
D.C (South)-	1
DC (Riot,Traffic,Protection & Supply)-	1
A.C (Crime)-	1
AC,CSB-	1
AC (ASP Finance & accounts)-	1

Reader-	2
AddlCommissioner office	1
AC (ASP Crime &Data Analysis)-	1

Office Assistant-	10
AddlCommissioner office	1
D.C (North)-	1
D.C (South)-	1
DC (Riot,Traffic,Protection & Supply)-	1
AC (ASP Finance & accounts)-	2
AC (ASP Crime &Data Analysis)-	1
AC,CSB-	1
AC (Estate & Welfare)-	1
A.C (Supply)	1

M.L.S.S-	4
Commissioner office	2
AddlCommissioner office	1
D.C (H.Q)-	1

Cook-	20
Sweeper-	20

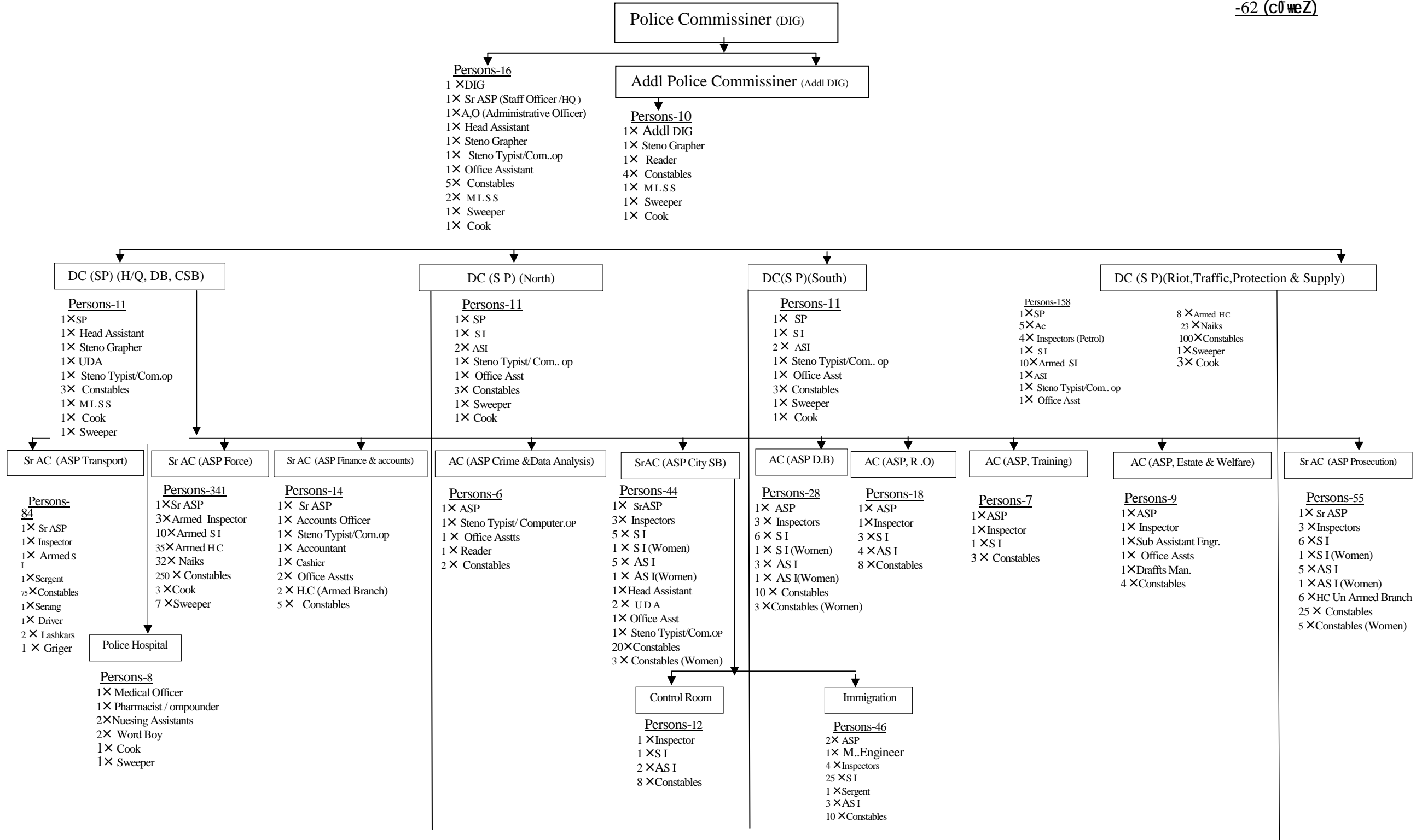
From out Sourcing-

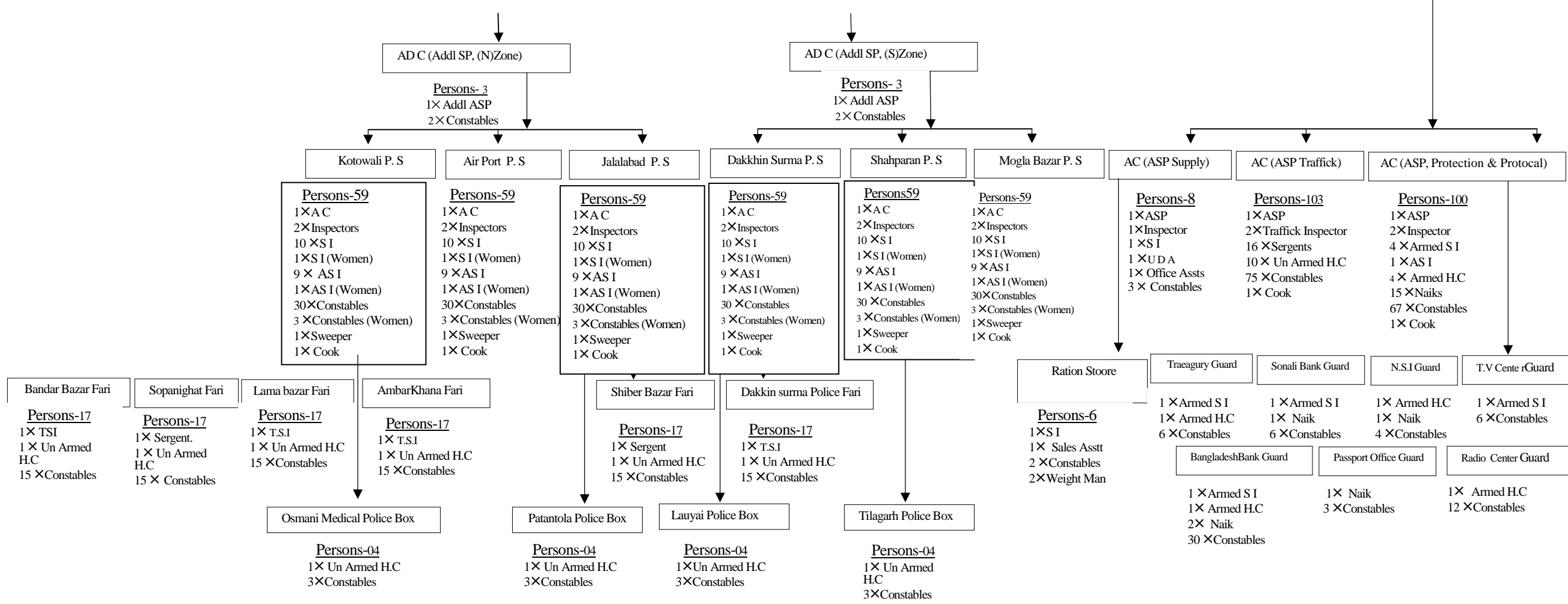
m t- (1) - 1v0gšyij q -šik bs- tgt(ct-3)c` -1/2006/701 Zvs-16/10/2006 Bs Ges ct tnWt -šik bs-Avi GUGg/10-2006/1461(8) Zvs-22/10/2006 Bs gšj gAjxKZ c` msl`v=1518 Rb|

(2) - 1v0gšyij q -šik bs- tgt(ct-3)c` -35/2004(Ask)/637 Zvs-24/09/2006 Bs Ges ct tnWt -šik bs-Avi GUGg/109-2005(Ask)/478(60) Zvs-9/4/2007 Bs gšj gAjxKZ c` msl`v=25 Rb(Big#Mkbt i Rb)mn mešgu=1543 Rb|

Proposed Organizational Setup of Sylhet Metropolitan Police

(1518+25)=Total Peraons-1543 (gAjxc0B)
-62 (c0weZ)





GmGgic0i we`"gvb tKwAvB mgfni wbi vCv WVDwI Rb` 270 w bZb c` mRtbi j t9" c0 weZ AM@bM0g |

Sylhet Osmani International Air port, Sylhet.

Persons-24
 1×AC
 1× Armed Inspectors
 1× Armed S I
 3× Armed H.C
 3× Naik
 15×Constables

Bangladesh Bank Sylhet Branch, Sylhet.

Persons-05
 1×AC
 1× Armed Inspectors
 2× Armed H.C
 1× Naik

Transmitting station (Radio Bangladesh), Sylhet.

Persons-11
 1×AC
 1× Armed Inspectors
 1× Armed S I
 2× Armed H.C
 3× Naik
 3×Constables

Broadcasting House (Radio Bangladesh), Mirer Maidan, Sylhet.

Persons-24
 1×AC
 1× Armed Inspectors
 1× Armed S I
 3× Armed H.C
 3× Naik
 15×Constables

Microwave Station, Kazitola, Sylhet town, Sylhet.

Persons-24
 1×AC
 1× Armed Inspectors
 1× Armed S I
 3× Armed H.C
 3× Naik
 15×Constables

BTV Sylhet.

Persons-17
 1×AC
 1× Armed Inspectors
 3× Armed H.C
 3× Naik
 9×Constables

Taltala Telephone Exchange, Sylhet.

Persons-24
 1×AC
 1× Armed Inspectors
 1× Armed S I
 3× Armed H.C
 3× Naik
 15×Constables

Keane road bridge over Surma river (490ft) Southern side of sylhet Town, Sylhet.

Persons-24
 1×AC
 1× Armed Inspectors
 1× Armed S I
 3× Armed H.C
 3× Naik
 15×Constables

20MW Sylhet Gasturbian Electric Center, Sylhet.

Persons-24
 1×AC
 1× Armed Inspectors
 1× Armed S I
 3× Armed H.C
 3× Naik
 15×Constables

Hazrat Shahjalal (R) Setu, Sylhet.

Persons-24
 1×AC
 1× Armed Inspectors
 1× Armed S I
 3× Armed H.C
 3× Naik
 15×Constables

Jamuna Oil Ltd, oil depot on the Bank of river Surma, Sylhet.

Persons-23
 1× Armed Inspectors
 1× Armed S I
 3× Armed H.C
 3× Naik
 15×Constables

Burma Eastern principal Oil Depot, Sylhet.

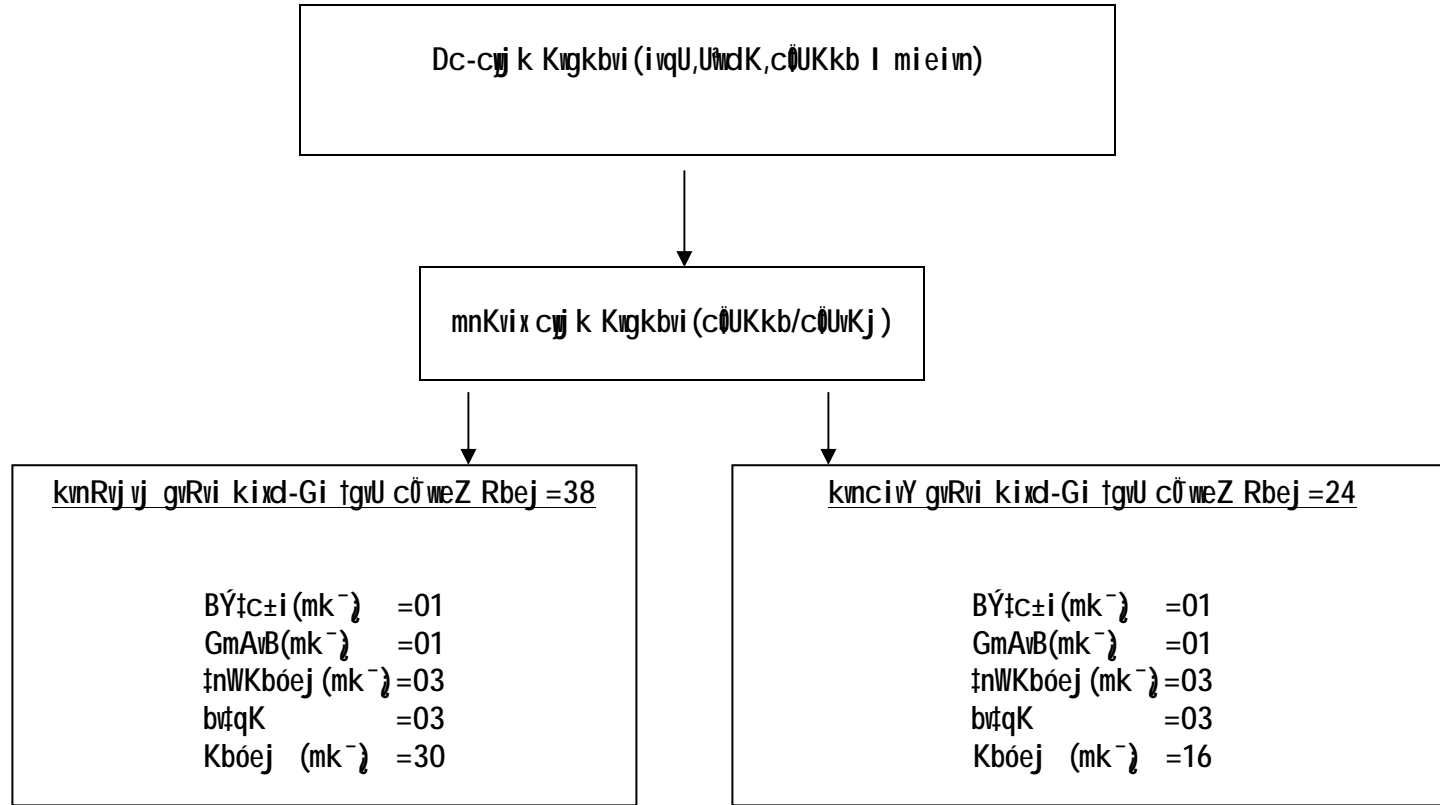
Persons-23
 1× Armed Inspectors
 1× Armed S I
 3× Armed H.C
 3× Naik
 15×Constables

132/33/11KV Grid sub station, Sylhet.

Persons-23
 1× Armed Inspectors
 1× Armed S I
 3× Armed H.C
 3× Naik
 15×Constables

%a q` tZs dK Dwil b Avntg` ,wCwC Gg(tmev)
 wevc-5988007938
 cwj k Kwgk bvi
 wntj U t9tU0cwj Ub cwj k
 wntj U |
 tUwj t dlv bs-0821-2830311 |
 t9vevBj bs-01713-374506 |

GmGgic0i Avl Zvaxb wmtj U kni 'cieI kvnRvj vj gvRvi I kvncivY gvRvi kixd mgñi wbiycEv wWDiUi Rb"(38+24)= 62 wU bZb c` mRtbi j tñ" c0 weZ AM@bW0g|



(tgrt ti RvDj Kwig)
weic-6795010035
Dc-cyj k Kvgkbvi (m` i)
cññ-cyj k Kvgkbvi
wmtj U tgvUcññ Ub cyj k,
wmtj U|
☎0821-713572 📠01713-374508
Emil-dchqsmp@police.gov.bd

ৱম্‌ত্‌জ্‌ উ ক্বনRব্‌জ্‌ ব্‌জ্‌ ৱেÁব্‌ I চ্‌হ্‌৩ ৱেক্‌ৱে`'ব্‌জ্‌ q চ্‌জ্‌ ক্‌ দ্বোi Rb` 42 ৱU bZb c` mRtbi j t¶' cŭ ৱেZ AM@bvlMg|

Dc-চ্‌জ্‌ ক্‌ Kৱgkbi (i ৱqU, UৱdK, cŭUkKb I mieivn)



mnKvix চ্‌জ্‌ ক্‌ Kৱgkbi (cŭUkKb/cŭUvKj)



ৱম্‌ত্‌জ্‌ উ ক্বনRব্‌জ্‌ ব্‌জ্‌ ৱেÁব্‌ I চ্‌হ্‌৩ ৱেক্‌ৱে`'ব্‌জ্‌ q চ্‌জ্‌ ক্‌ দ্বোi tgvU cŭ ৱেZ Rbej =42

Bŷtci (kni I hbevb)	=	01
GmAvB (ibi`)	=	01
ৱU GmAvB	=	02
GGmAvB	=	04
t¶WKbt÷ej (ibi`)	=	04
Kbt÷ej (mk`)	=	30

(tgv t i RvDj Kwi g)
ৱেic-6795010035
Dc-চ্‌জ্‌ ক্‌ Kৱgkbi (m` i)
c†¶-চ্‌জ্‌ ক্‌ Kৱgkbi
ৱম্‌ত্‌জ্‌ উ tgvUcuj Ub চ্‌জ্‌ ক্‌,
ৱম্‌ত্‌জ্‌ উ |
☎ 0821-713572 📠 01713-374508
Emil-dchqsmp@police.gov.bd